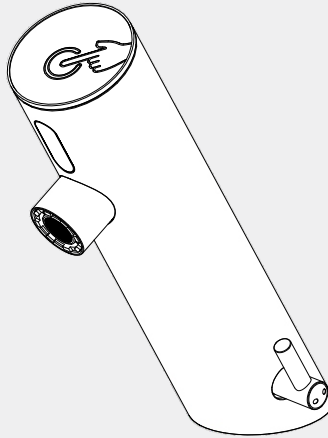


Commercial Sensor Mixer

Nero



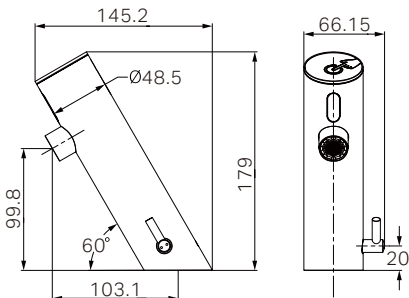
Lead Free



Versions:202405



Drawing



Specifications

Watermark License

WM-060073

Temperature Rating

Min 1 °C-Max 75 °C

Pressure Rating

Min 150kpa - Max 500kpa

Finish & SKU

● PVD Black
NR406PB

● Brushed Nickel
NR406BN

Packaging Includes

- 1x Sensor Mixer
- 1x Transformer
- 1x Battery Set

*Dimensions are nominal measurements only.

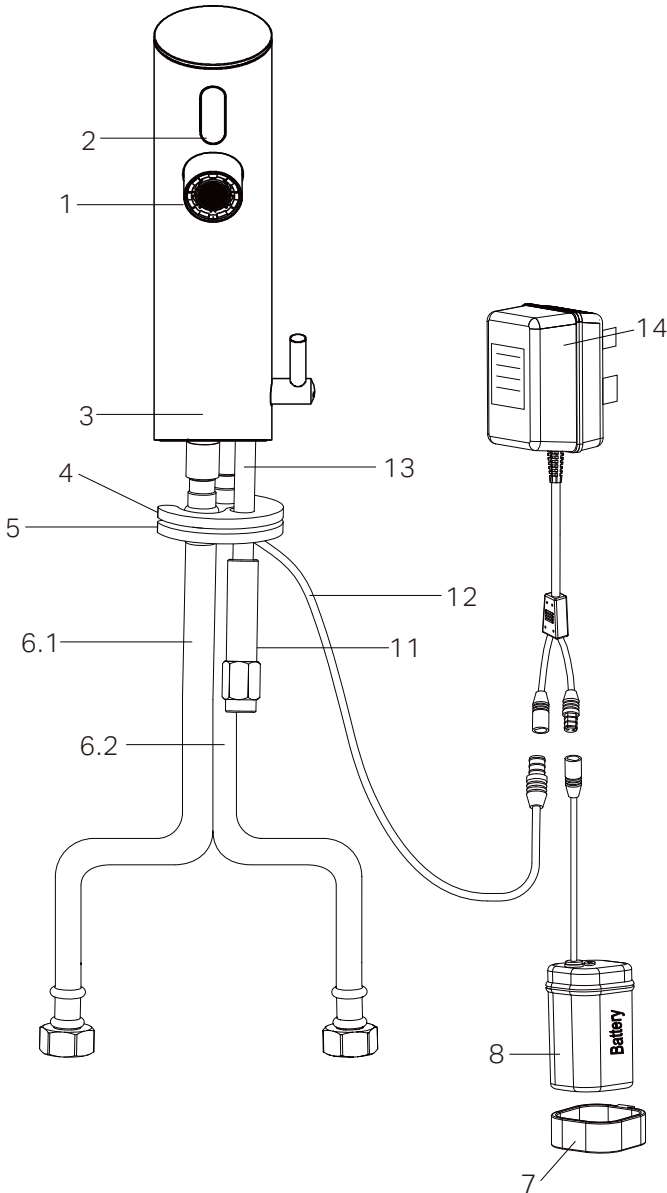
GENERAL INSTRUCTIONS:

- This product must be installed by a licensed plumber. Ensure that your plumbing installation conforms to the Australian/New Zealand Standard AS/NZS 3500.
- All pipework must be thoroughly flushed prior to the installation of the mixer. In-line filters must be fitted on both hot and cold supplies to prevent foreign particles from damaging the ceramic cartridge.
- All outlets used primarily for personal hygiene must deliver water at a safe temperature in accordance with regional regulations.

NOTE:

- After installation, all connections must be checked for leaks.
- This mixer is not recommended for use in uncontrolled heating systems such as wet-backs or solar heating units unless a suitable tempering valve is fitted.
- If limited water flow is experienced, locate aerator and filter washers and clean away foreign material as required.
- It is the responsibility of the plumber to ensure a waterproof seal is achieved between the product and mounting surface. If in doubt about the quality of the seal, remove the product and reinstall.

Components

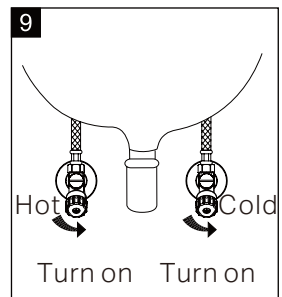
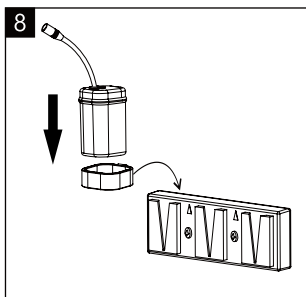
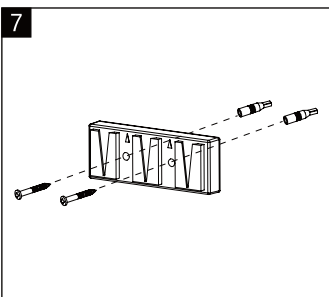
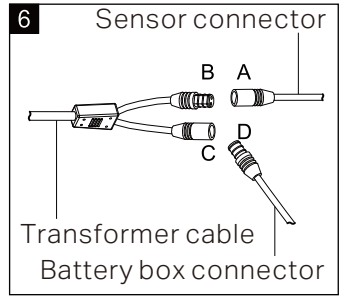
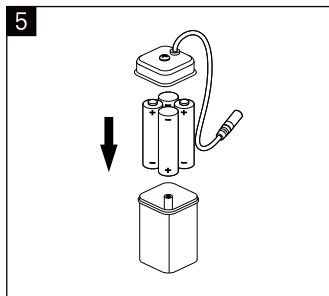
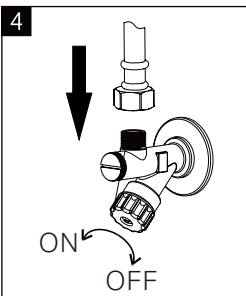
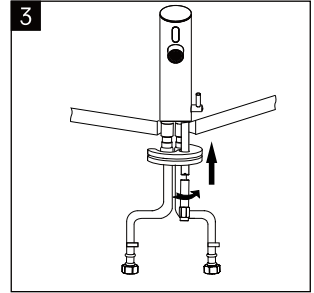
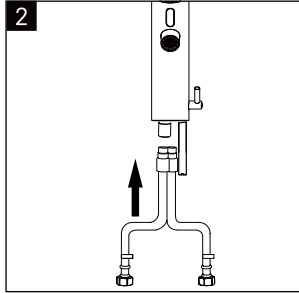
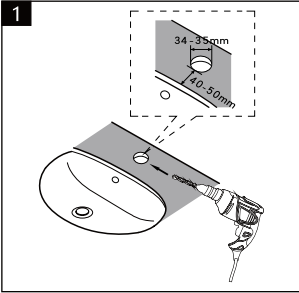


Parts

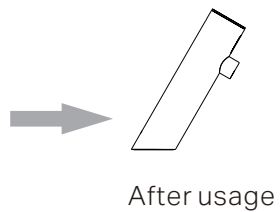
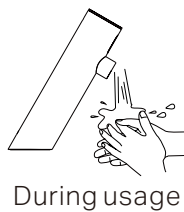
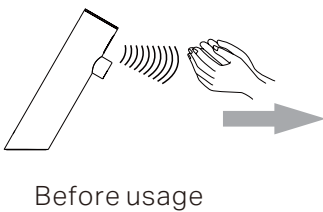
1. Aerator
2. Sensor
3. Mixer body
4. Rubber washer
5. Brass washer
- 6.1 Hot water inlet(Red)
- 6.2 Cold water inlet(Blue)
7. Battery box hook
8. Battery box
9. AA Battery
10. Fixing plate
11. Fixing nut
12. Power cable
13. Fixing screw
14. Transformer

Disposal: Batteries, accessories, and packaging should be sorted for environmentally-friendly recycling. Do not dispose of batteries into household waste!

Installation Guide



How To Use



Functions And Features

- Hands-free infrared sensor activation.
- Automatic shut-off with water-saving flow control.
- Improves water and energy efficiency.
- Hygienic, reduces risk of cross-contamination.
- Includes mains and battery-powered options.
- Vandal-resistant.
- Easy to install in new or retrofit applications.
- Self-setting appropriate sensor field within 30 seconds when wired in.
- Adjustable water temperature.

Technical Specification

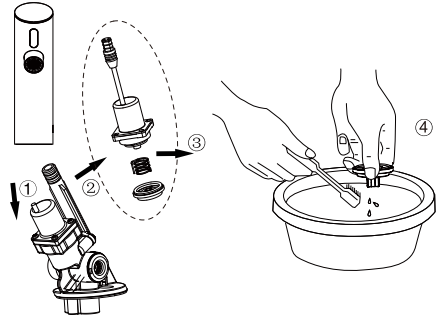
Model no.	NR406
Power supply	DC:6V(4AA alkaline battery) AC:220/50Hz
Water pressure	150Kpa-500Kpa
Static power consumption	DC:≤0.2mW AC:≤2W
Sensor distance	22±10% cm(To white board)
Inlet diameter	G1/2&G3/8
Water temperature	≤75°C

Troubleshooting

Description	Cause	Treatment
No water out	The battery is exhausted	Change the battery
	Water supply cut off	Check supply
	Dirt in the filter	Clean the filter
	Water pressure is too low	Raise the pressure
Water will not turn off	Dirt on the sensor window	Clean the sensor
Too little water flow	Water supply is turned down	Adjust water supply
	The filter is too dirty	Clean the filter
	Water pressure is too low	Raise the pressure
Too much water flow	Water pressure is too high	Adjust pressure
Short battery cycles	Incorrect batteries	Change to 4AA Alkaline batteries
The indicator light is off	The light is broken	Change the light or circuit board
	The circuit board is wet or signal line is wet	Dry out
	The battery is exhausted	Change the battery
	Poor connection of battery	Change battery connections

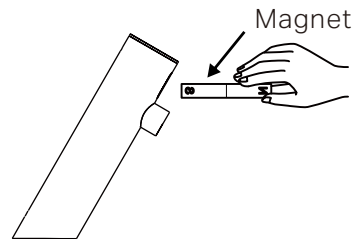
Cleaning The Solenoid Valve

1. Turn off the valve.
2. Unscrew the flexible hose.
3. Remove the filter.
4. Clean the filter and replace it.



Adjustment Of Sensor Distance

1. When the magnet is close to the sensor, the LED indicator flashes continuously, indicating the start of distance adjustment.
2. Place your hand at the desired distance. The adjustment is complete when the LED indicator stops flashing.



MAINTENANCE AND CARE:

- Regularly check the mixer and connections for signs of wear or leaks.
- Clean the tap with mild soapy water to maintain its appearance, avoiding harsh chemicals and abrasive materials that may damage the finish.

FINAL INSPECTION:

- Ensure the tap operates smoothly and that there are no leaks at the connections.
- Clean the area and the newly installed tap with a soft cloth to remove any installation residues.

Nero



Lead Free

