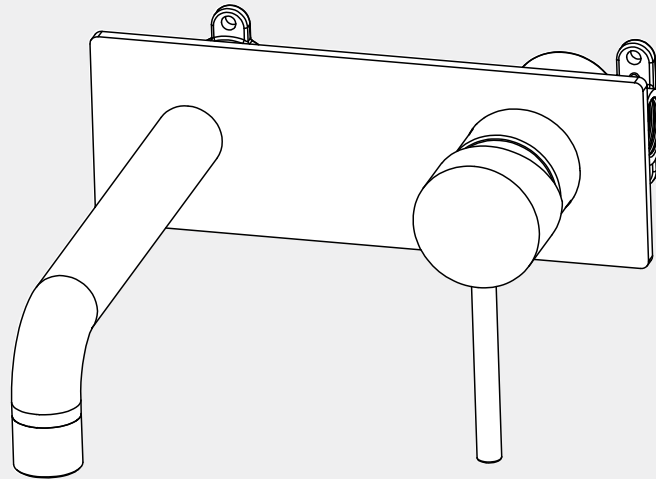


Dolce Wall Basin/bath Mixer

Nero



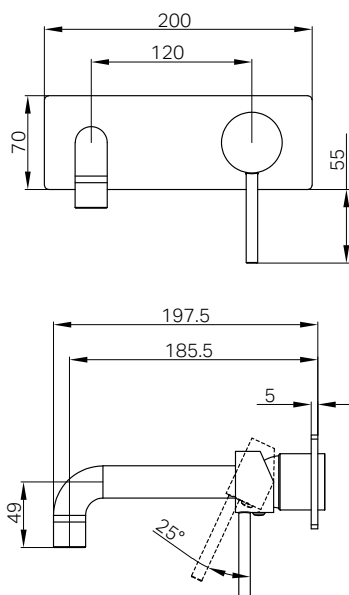
Lead Free



Versions:202405



Drawing



Specifications

Watermark License

WM-060073






Temperature Rating

Min 1°C-Max 75°C

Pressure Rating

Min 150kpa - Max 500kpa

Finish

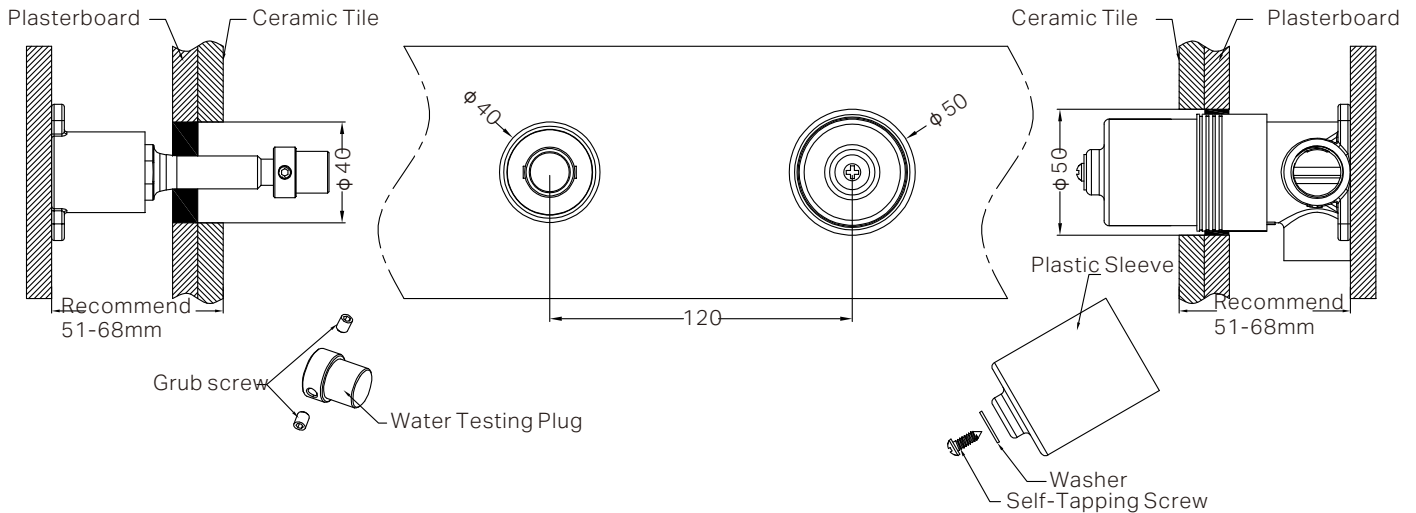
- | | | |
|--|---|---|
|  Chrome
NR250810bCH |  Gun Metal
NR250810bGM |  Brushed Nickel
NR250810bBN |
|  Matte Black
NR250810bMB |  Brushed Gold
NR250810bBG | |

*Dimensions are nominal measurements only.

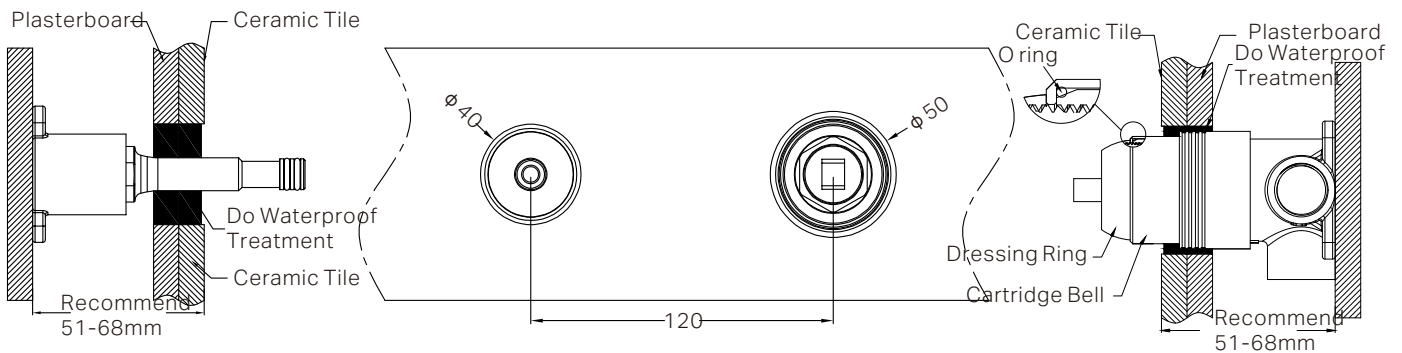
Group Item

- 1x Universal Body
- 1x Trim Kits Only

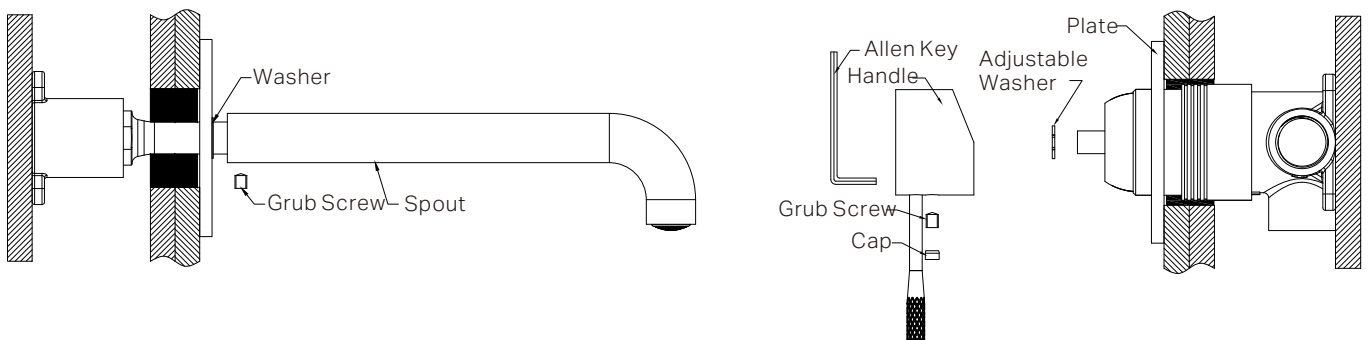
Installation Instruction For Trim Kits Only



1. Drill a ϕ 50mm and a ϕ 40mm hole in the ceramic tile, then position it as shown in the above diagram.
2. Undo the self-taping screw to remove the plastic sleeve, and release the grub screws to remove the water testing plug.



3. Insert the O ring to the cartridge bell groove, and slide the dressing ring onto cartridge.
4. Apply waterproof treatment to the area indicated in the diagram above.
5. Tighten up the dressing ring on the cartridge bell.



6. Slide the backplate and washer onto the wall, set the spout in place, and secure it tightly using the grub screw.
 7. Position the handle, tighten it with a grub screw using an Allen key, and cap the grub screw hole.
- Please note: there is a washer between backplate and the spout.

MAINTENANCE AND CARE:

- Regularly check the mixer and connections for signs of wear or leaks.
- Clean the tap with mild soapy water to maintain its appearance, avoiding harsh chemicals and abrasive materials that may damage the finish.

FINAL INSPECTION:

- Ensure the tap operates smoothly and that there are no leaks at the connections.
- Clean the area and the newly installed tap with a soft cloth to remove any installation residues.

Nero



Lead Free

