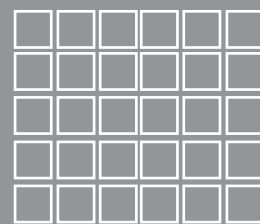
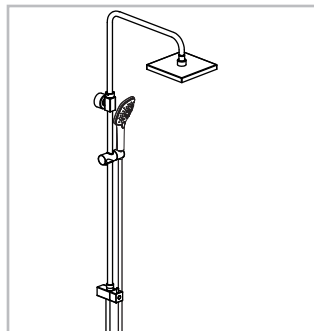


To ensure that your installation proceeds smoothly,
please read this instructions carefully before you begin.

American Standard

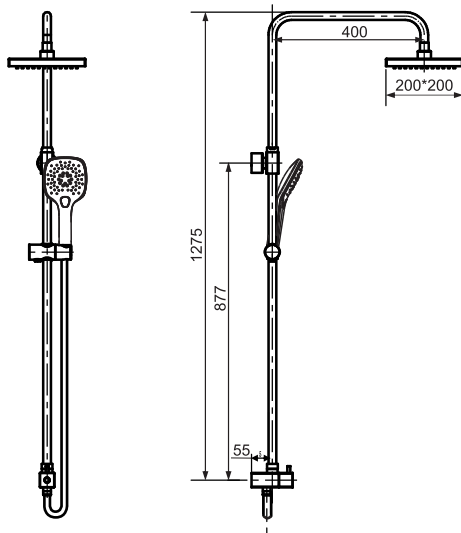
FFAS9061-091500BC0
CYGNET TWIN SHOWER SQR 3F



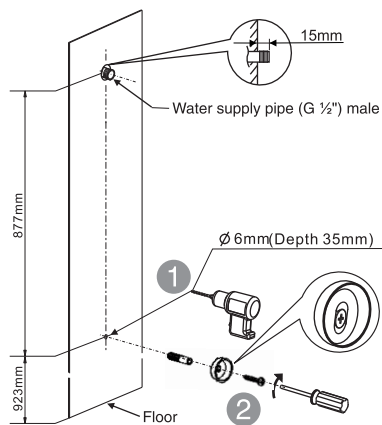
Installation &
Operation Instruction

Dimension

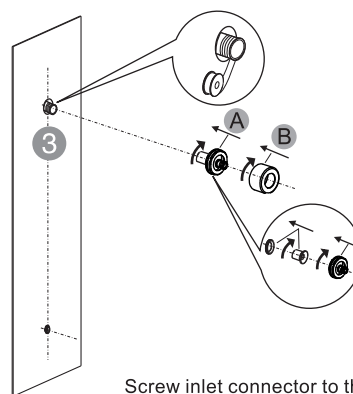
Unit: mm



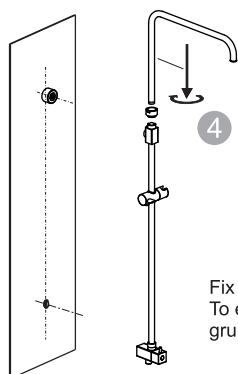
Installation



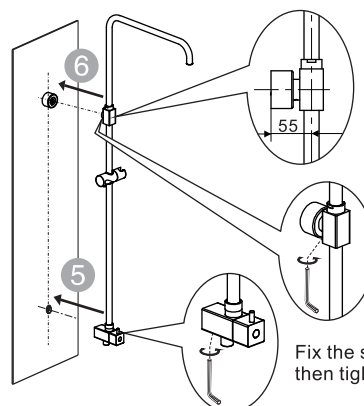
Drill hole according to the dimension. Anchor into the wall.
then secure the base plate to the wall by using screw.



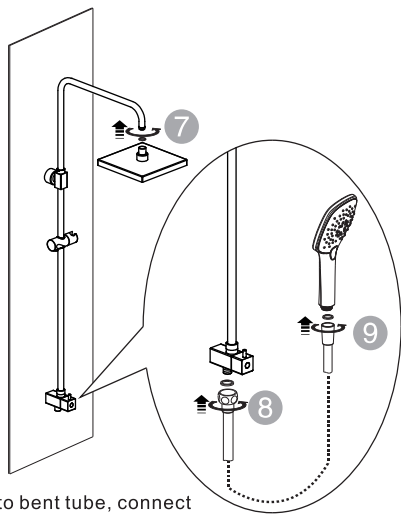
Screw inlet connector to the water supply pipe.



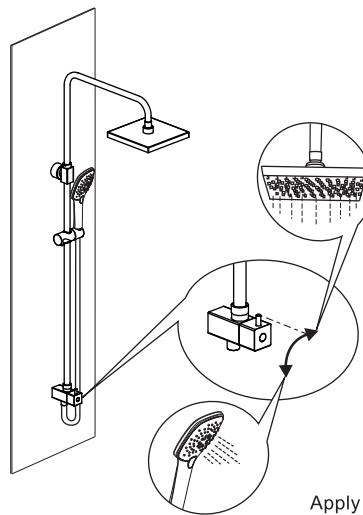
Fix the bent tube to the upper bracket as per diagram 4.
To ensure upper bracket is positioned correctly the
grub screw must be positioned underneath.



Fix the shower body to the shower rail,
then tighten it with the In-hex wrench.

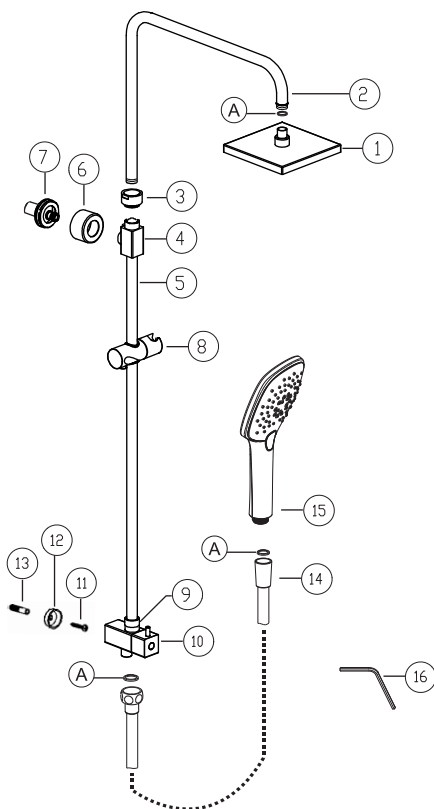


Screw shower head to bent tube, connect shower hose to hand shower and Adapter.



Apply pressure and check for leaks.

Parts List



No.	Part Name	Q'ty
1	Head shower	1
2	Rail tube	1
3	Nut	1
4	Fixed sleeve	1
5	Pipe	1
6	Bracket	1
7	Bracket base	1
8	Slider	1
9	Nut	1
10	Diverter Valve	1
11	Screw	1
12	Fixing Ring	1
13	Anchor	1
14	Hose	1
15	Hand shower	1
16	L-wrench	1
A	Washer	3

Notice

- * Remove all impurity in pipes before beginning to avoid clogging. Connect faucet pipes correctly.
- * Check installation distances in the Dimension diagram to ensure correct installation.

Conditions for use

- * Pressure limiting value must be installed limited to 500Kpa
- * Best performance we recommend 150 to 500Kpa
- * Hot & cold water inlet pressure should be equal
- * Recommended maximum water temperature 65C

AUS

Reece Australia Pty Ltd
118 Burwood Hwy
Burwood VIC 3125

Tel.: 1800 080 055

Email: customercare@reece.com.au



NZ

Robertson
25 Vestey Drive
Mt Wellington, Auckland

Tel.: +64 9 5730490

Email: sales@robertson.co.nz