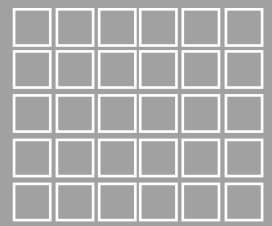
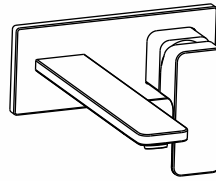


To ensure that your installation proceeds smoothly,
please read this instructions carefully before you begin.

American Standard

CYGNET

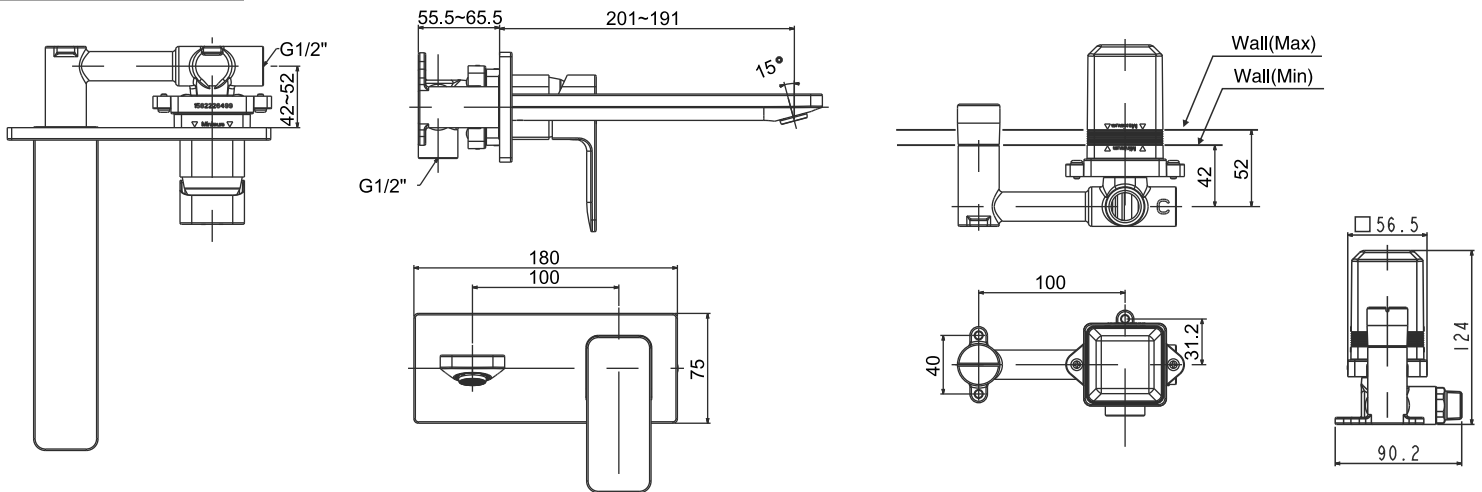
FFAS1304-102500ZNO
CYGNET WALL BASIN MIXER SET CP (4*)



Installation &
Operation Instruction

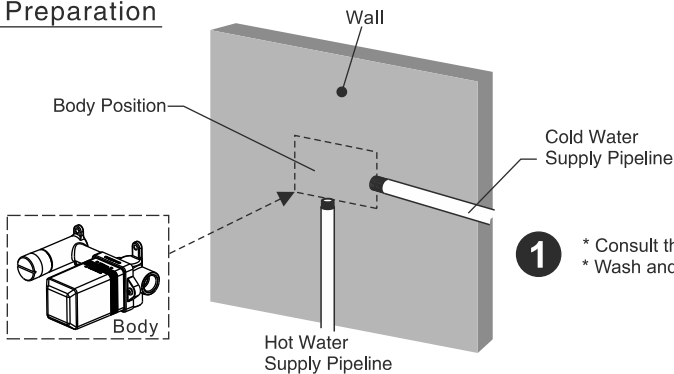
Dimension

Unit: mm



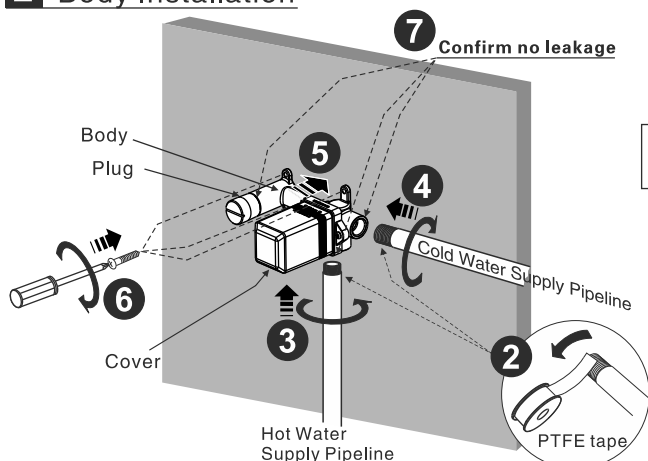
Installation

1 Preparation

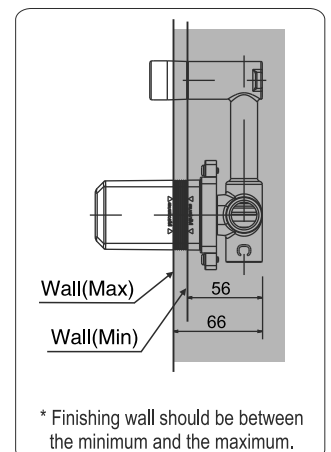
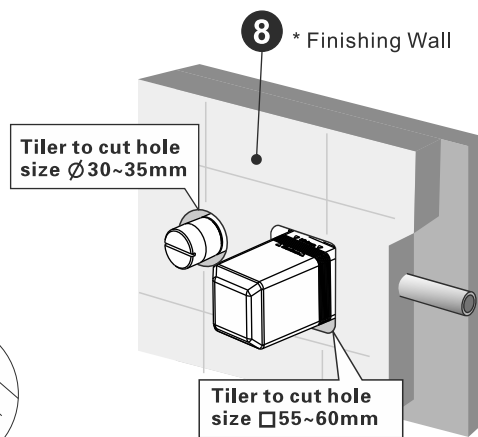


- * Consult the dimension drawing and lay the pipes.
- * Wash and clean the water supply pipeline.

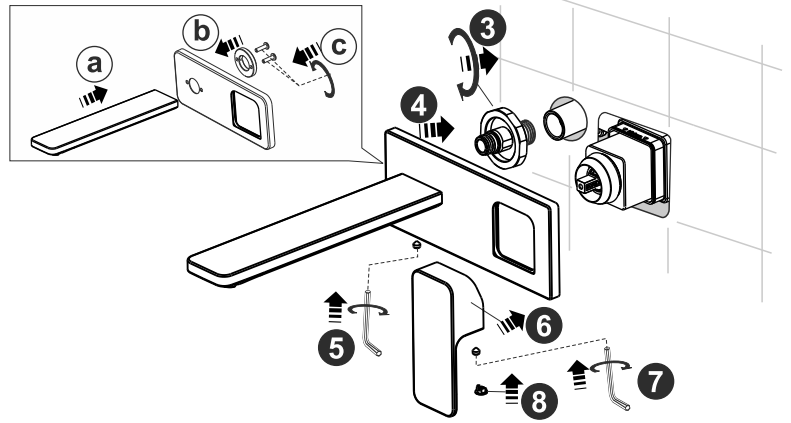
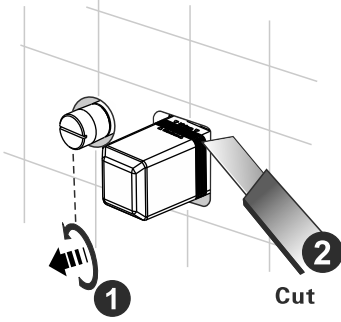
2 Body Installation



8 * Finishing Wall

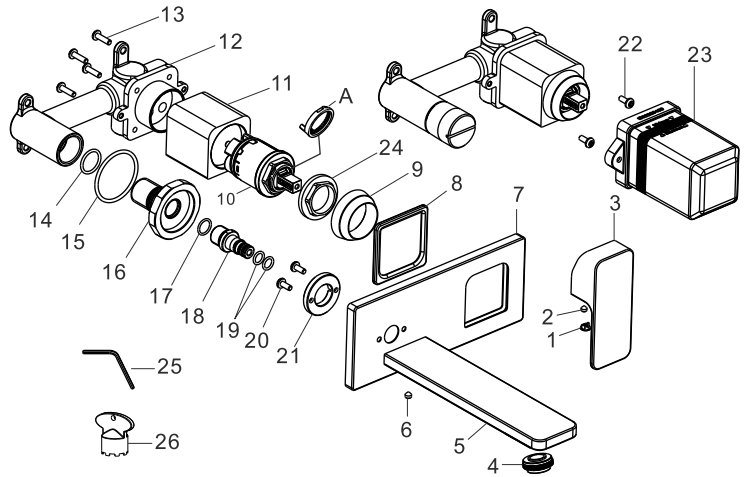


3 Spout & Handle Installation

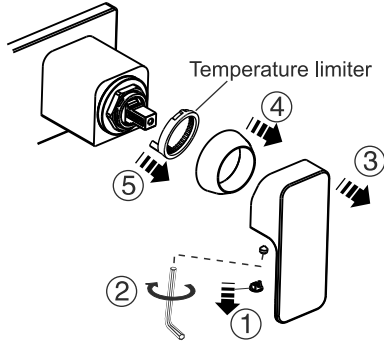


Parts List

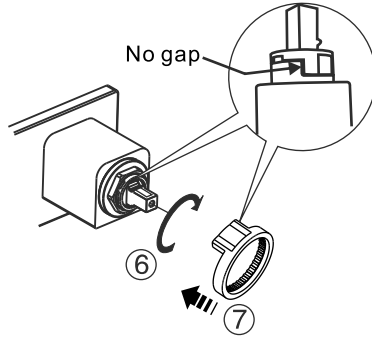
No.	Part Name	Q'ty	No.	Part Name	Q'ty
1	Index Button	1	15	O-Ring	1
2	Screw	1	16	Connector	1
3	Handle	1	17	O-Ring	1
4	Aerator	1	18	Connector	1
5	Spout	1	19	O-Ring	2
6	Screw	1	20	Screw	2
7	Escutcheon	1	21	Fixing plate	1
8	Washer	1	22	Screw	1
9	Cap	1	23	Cover	1
10	Cartridge	1	24	Nut	1
11	Bushing	1	25	In-hex Wrench	1
12	Body	1	26	Aerator Wrench	1
13	Screw	4	A	Temperature limiter	1
14	O-Ring	1			



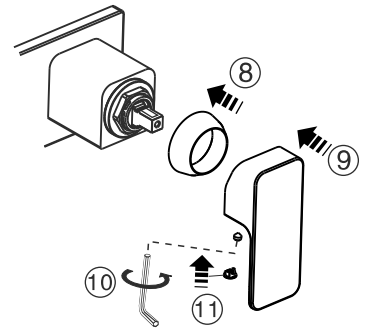
Operation instruction for temperature Limiter



- * Remove the handle and cover, you can see the cartridge.
- * Take out the temperature limiter.



- * Move the pivot of cartridge to the position of you wanted hot water temperature. Reinstall the temperature limiter with no gap as shown in the figure above.



- * Install cap and handle.

Notice

- * Remove all impurity in pipes before beginning to avoid clogging. Connect faucet pipes correctly.
- * Check installation distances in the Dimension diagram to ensure correct installation.

Conditions for use

- * Recommended water pressure condition: 0.1~0.5Mpa.
- * Environment Temperature: 1~55°C
- * Water temperature: 4 ~ 90°C, Recommended hot water temperature 55°C ~ 65°C
- * Steam is not allowed to use.
- * The cold and hot water pipes must not be reserved.

AUS

Reece Australia Pty Ltd
118 Burwood Hwy
Burwood VIC 3125

Tel.: 1800 080 055

Email: customercare@reece.com.au



NZ

Robertson
25 Vestey Drive
Mt Wellington, Auckland

Tel.: +64 9 5730490

Email: sales@robertson.co.nz