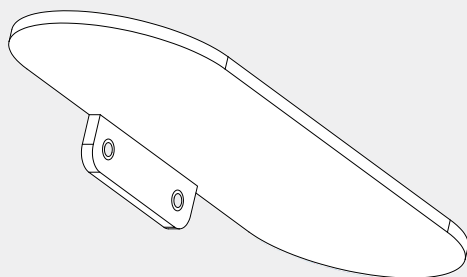


# Zen SS316L Soap Dish Holder

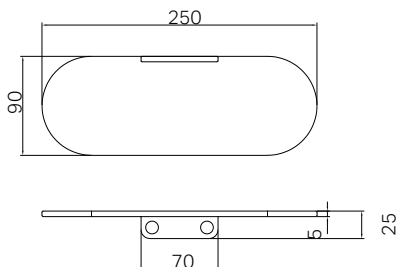
Nero



Versions:202405

25 YEARS WARRANTY  
25  
25 YEARS WARRANTY

## Drawing




## Features

- 316L grade stainless steel construction for durability
- Easy to install

## Packaging Includes


- 1x Soap Dish Holder
- 1x Fixing Kit

## Finish & SKU

 **Brushed Bronze**  
NR1681BZ

 **Brushed Gold**  
NR1681BG

 **Graphite**  
NR1681GR

 **Brushed Nickel**  
NR1681BN

\*Dimensions are nominal measurements only.

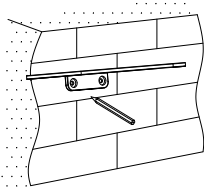
# Installation Instruction

## GENERAL INSTRUCTIONS AND WARNINGS

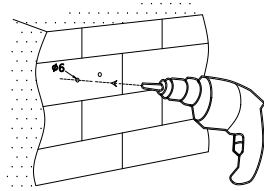
- Before installation, make sure the wall surface is clean and dry to ensure a secure attachment.
- When tightening screws, do not apply excessive force to prevent damage to the wall or the fixtures.
- Use the correct tools: a drill with a 6mm bit, screwdriver, and level.
- Wear appropriate safety gear, such as gloves and safety glasses, to protect yourself during installation.
- Before drilling, check the wall for any hidden pipes or electrical wires to avoid accidental damage.
- Ensure all measurements are accurate before drilling holes to prevent misalignment of the accessories.

## MAINTENANCE AND CARE

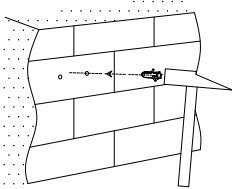
- Clean the accessories with a soft, damp cloth. Avoid using abrasive cleaners, which can damage the finish.



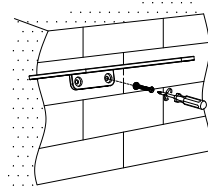
1. Place the soap dish holder in the desired installation position. Use a level to ensure the soap dish holder is horizontal. Mark the positions directly below the bases with a marking pen.



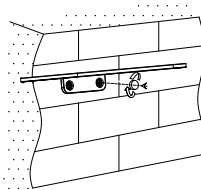
2. Use an electric drill with a 6mm drill bit to drill holes at the marked points.



3. Insert the expansion plugs into the drilled holes using a hammer.



4. Place the soap dish holder and secure it firmly with expansion screws.



5. Cap the screw holes.