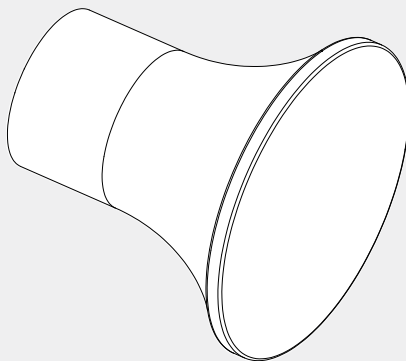


# Zen SS316L Robe Hook

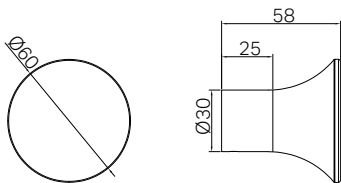
Nero



Versions:202405

25 YEARS WARRANTY  
**25**  
25 YEARS WARRANTY

## Drawing



## Features

- 316L grade stainless steel construction for durability
- Easy to install

## Packaging Includes

- 1x Robe Hook
- 1x Fixing Kit

## Finish & SKU

- |   |   |
|---|---|
|  <b>Brushed Bronze</b><br>NR1682BZ |  <b>Graphite</b><br>NR1682GR       |
|  <b>Brushed Gold</b><br>NR1682BG   |  <b>Brushed Nickel</b><br>NR1682BN |

\*Dimensions are nominal measurements only.

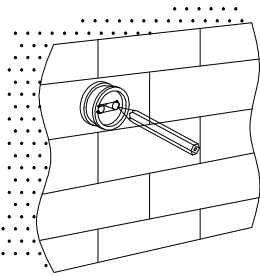
# Installation Instruction

## GENERAL INSTRUCTIONS AND WARNINGS

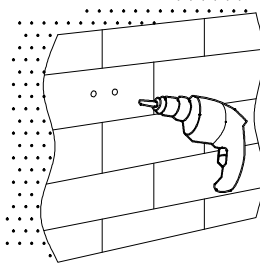
- Before installation, make sure the wall surface is clean and dry to ensure a secure attachment.
- When tightening screws, do not apply excessive force to prevent damage to the wall or the fixtures.
- Use the correct tools: a drill with a 6mm bit, screwdriver, and level.
- Wear appropriate safety gear, such as gloves and safety glasses, to protect yourself during installation.
- Before drilling, check the wall for any hidden pipes or electrical wires to avoid accidental damage.
- Ensure all measurements are accurate before drilling holes to prevent misalignment of the accessories.

## MAINTENANCE AND CARE

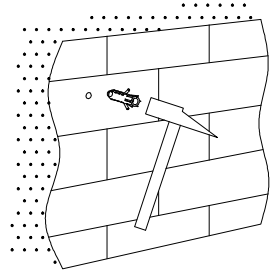
- Clean the accessories with a soft, damp cloth. Avoid using abrasive cleaners, which can damage the finish.



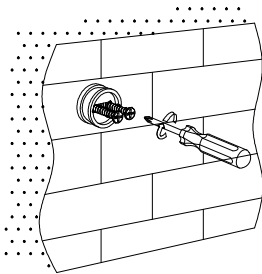
1. Use the fixing bracket to mark the drilling points on the wall.



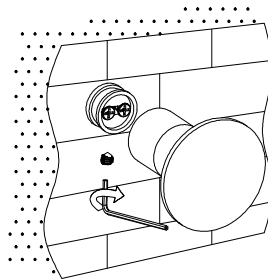
2. Use an electric drill with a 6mm drill bit to drill holes at the marked points.



3. Insert the expansion plugs into the drilled holes using a hammer.



4. Place the fixing bracket covers over the holes and secure them firmly with expansion screws.



5. Install the robe hook onto the fixing bracket and secure it by tightening the grub screw.