

MINIMALIST MK2 WALL MOUNTED MIXER WITH SPOUT TRIM KIT

Installation Guide

Technical Specifications:

Operating Pressure:

Min: 150kPa/1.5bar

Max: 1000kPa/10bar*

Optimum: 150kPa/1.5bar - 500kPa/5bar

Operating Temperature:

Hot: Max 80°C*

Cold: Min 5°C

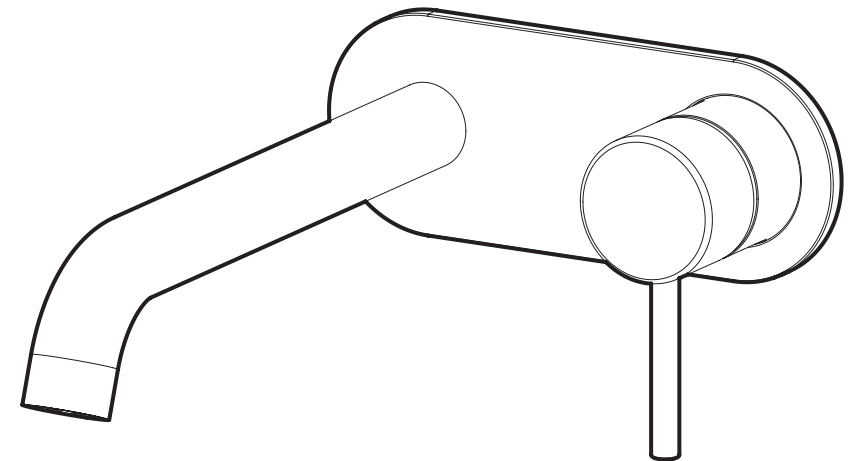
Inlet Connections:

All ½" BSP

* Regional specific regulations apply.

Please refer to your warranty statement at

www.methven.com



Care and Cleaning:

Never use abrasives or abrasive cleaning agents to clean this product. Clean regularly with contamination free warm soapy water and a damp soft cloth.

Methven warrants this product against manufacturing defects and that it is suitable for use under the general operating conditions specified in this instruction sheet. However, regional regulations apply and may affect your warranty. Please refer to www.methven.com or call customer service for full details.

New Zealand
0800 804 222

Australia
13 14 16

UK
0800 195 1602

IS 1920

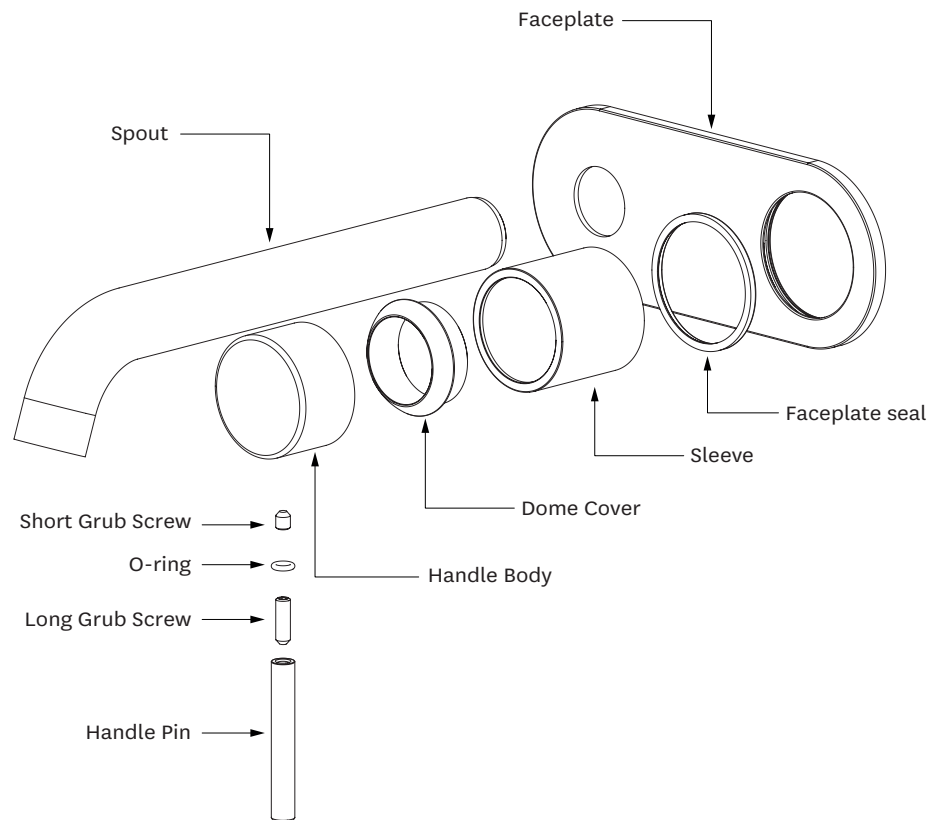
ISSUE A

METHVEN
www.methven.com

IMPORTANT: Please read all of the instructions before installation.

General:

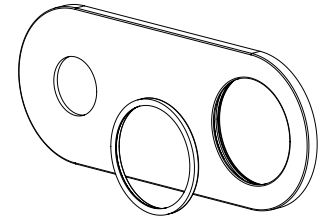
- Methven recommends this product is installed by a licensed plumber in compliance with all relevant regional regulations.
- It is the responsibility of the installer to ensure a waterproof seal is achieved between the product and mounting surface. If in doubt about the quality of the seal, remove the product and reinstall using silicone to ensure a seal is achieved.



IMPORTANT: Before you begin, turn off the water supply.

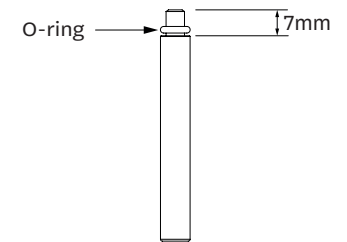
Step 1

- Pre-assemble the faceplate seal to the internal diameter of the faceplate.



Step 2

- Pre-assemble the long grub screw to the handle pin leaving 7mm of thread protruding.
- Fit small O-ring to protruding grub screw.



Step 3

- Remove plastic cover from mixer body.
- Lubricate O-ring on mixer body and fit trim kit sleeve.
- Apply silicon to rear of faceplate sub-assembly to create a seal with the finished wall surface. Press faceplate onto sleeve and press up against wall surface ensuring the logo is orientated correctly.
- Fit the dome cover by screwing it on to the nut until it contacts the sleeve.
- Fit the handle body to the cartridge spindle and secure with the short grub screw.
- Fit handle pin sub-assembly to the handle body and hand tighten.
- Check that the outlet spigot protrudes out from the faceplate by MAXIMUM 8mm (See diagram on the right). If not, carefully trim to size.
- Apply thread tape to the threads of the outlet spigot and screw the outlet spout onto the spigot until the shoulder contacts the faceplate and the spout is facing downwards.
- Turn on hot and cold water supplies and check operation.

